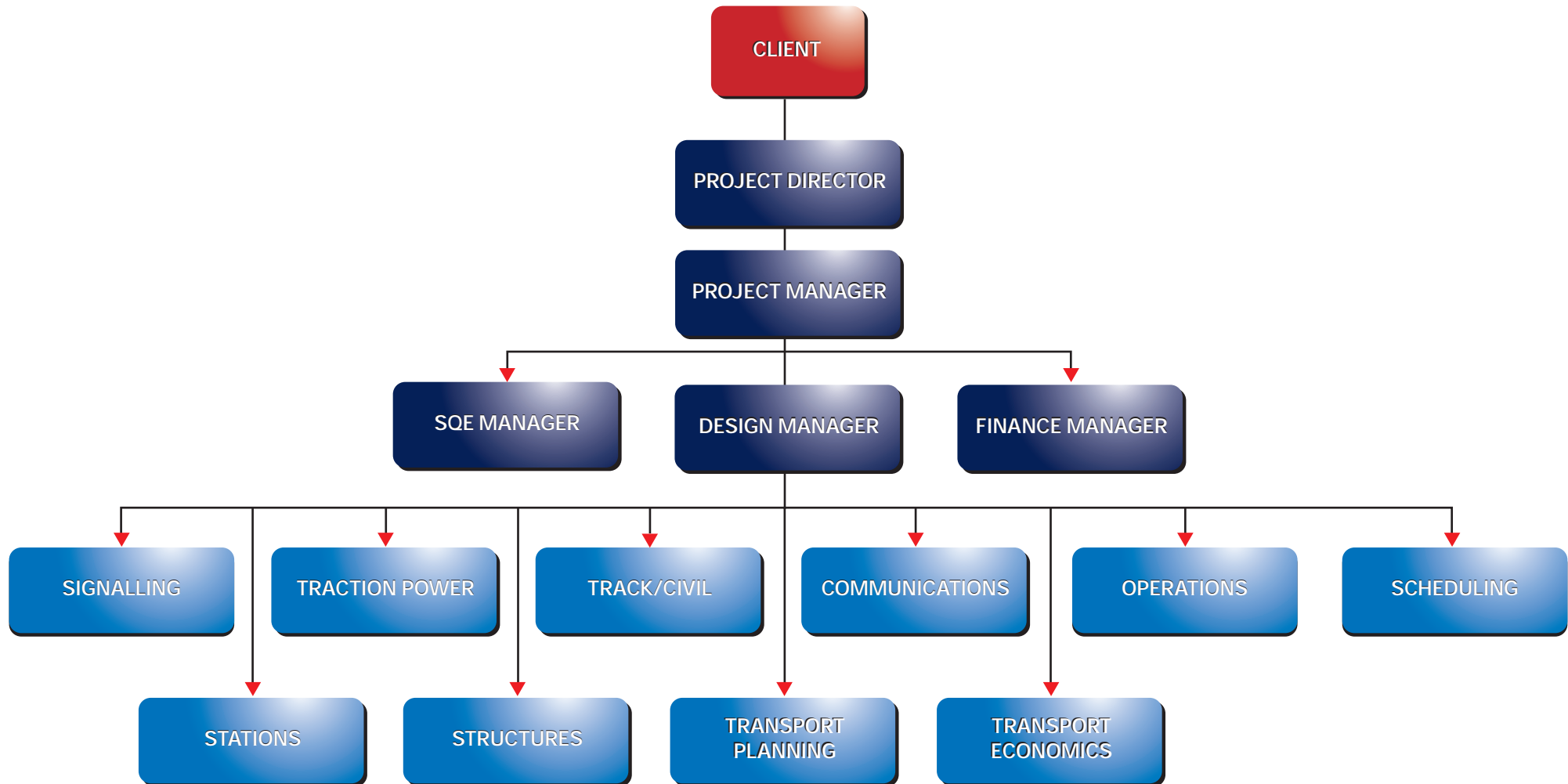


MCSI PROJECT TEAM STRUCTURE



- The Projects Director's mandate is to apply a client perspective to project activities.
- The SQE Manager is responsible for the implementation of MCSI's Safety, Quality and Environment system.
- The Project Manager deals with day-to-day activities and coordinates the projects deliverables, schedule and budget.
- The Design Manager coordinates the parallel design activities undertaken by the various disciplines.
- Team Leaders are assigned in each discipline to ensure that all designs comply with the applicable requirements specifications as well as MCSI's internal quality system.